



BT Integra-Pack™

Intelligent Package Test System

The TME BT Integra-Pack is a bench-top, high-resolution (0.001 psig) test instrument with a small footprint and user-friendly ease of operation. Electronic pressure and flow controls provide precise and repeatable test conditions, while automatic and high flow output allow testing of large porous packages. Applications cover a range of flexible or rigid, porous and non-porous, open or sealed packages.

“Out-of-the-Box” Burst Test Mode

The BT Integra-Pack is designed to provide out-of-the-box, automatic burst testing using default parameters so after attaching the package to be burst tested, the operator need only press ONE button to accomplish the test.

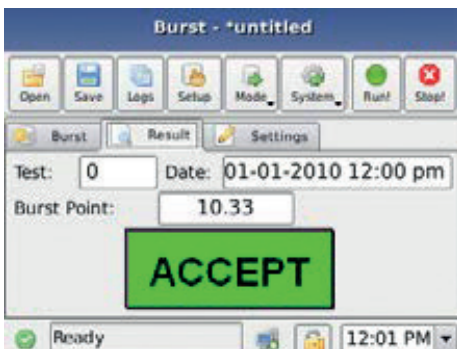
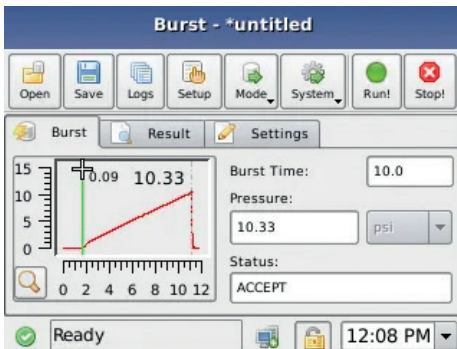
Automatic or Manual Parameter Definition

The intelligent BT Integra-Pack will test any package in automatic mode, with no need to input test parameters. However, its sophisticated nature is combined with a manual mode that lets the user input parameters such as ramp rate control and back pressure drop sensitivity. This allows testing of special configurations or types of packages or performance of specific research and data-gathering activities.

Icon-based, Touch-Driven Color Display

The touchscreen color display provides easy, clear navigation through the wide variety of data handling and review screens. Clearly defined icons make it easy to choose test modes, move from automatic to manual test settings, view test results in numeric and/or graphical format, and securely handle test data records.

The BT Integra-Pack is a definitive step forward for traditional burst testing. A completely integrated process control tool, the instrument is not only valuable at the point of testing, but is also able to transmit your data from direct process control to your quality department, making it a quality control tool as well. Its objective is to enable you to produce a package that is as valid as the product enclosed.



Typical Applications

Complies with all standards

Complies with all standards for all commonly used Seal Strength and Package Integrity tests

Automatic Burst Test Mode

Out-of-the-box results, no lengthy setup
Sense package size during prefill

Manual Burst Test Mode

Multiple levels of control for optimal test results:
Ramp rate, Porous vs. Non-porous Packages, Max/Min Acceptance Limits, Pressure Drop Sensitivity

High Performance

High Pressure Resolution (0.01 psi burst, 0.001 Leak)
Automatic Electronic Regulator (fast pressure setting)
High Flow Capacity (up to 15 CFM) Low Pressure Sensitivity at 5 InH²O

Advanced

Advanced, graphical user interface compatible with USB HID keyboards, mice, bar code readers

Low Power

Low Power Stand-by Mode for energy

Graphical

Graphical test plot display for leak, burst and creep tests

Touch Screen

Touch Screen Color LCD Display with Pop-up, On-screen Keyboard and Number Pad

Standard and Metric

Standard and Metric pressure units

Test data exported

Test data exported to PC using SUB Flash Driver or Integrated LAN File Server

Features

Standard Test Modes

Burst Test

Creep Test

Creep-to-Failure Test

Pressure Decay Leak Test

Standard I/O Functions

USB connection to PC, mouse, keyboard or printer
USB drive support for program data storage and data export
LAN remote instrument control and data transfer

Compliance to Standards

ASTM F-2054, F-1140, F-2095

ISO-11607 FDA CFR 21 Part 11

Accessories

Tilt Stand

TS-02 Closed Package Test Fixture

Test Probes (various sizes available)

TS-01 Open Package Fixture, 12" Jaw Width

TS-04 Open Package Fixture, 24" Jaw Width

Restraining Plate Fixtures

LA-05 Filter Drying Assembly

Digital Flow Vales, Leak Orifices

Custom Fixtures and adapters for your application

BT Integra Pack: Smart Package Tester Models

Model SKU	Measuring Range
BT-IP-050	5 InH ₂ O @ 4°C (0.1806 psi) to 50 psi (12.5 to 3450 mbar)
BT-IP-100	0.5 InH ₂ O @ 4°C (0.0180 psi) to 100 psi (34 to 6895 mbar)

Technical Specification

Controls	Electronic Pressure Control, Illuminated Start /Stop Switch, Key Lock, Power ON/OFF Switch
Memory capacity	160 MBs
Calibration	NIST Traceable
Test mode	Burst, Creep, Creep-to-Failure, Pressure Decay leak
Resolution	Burst: 0.01 psi (0.3 InH ₂ O or 0.7 mbar Leak (Pressure decay):0.001 psi (0.03 InH ₂ O) or 0.07 mbar
Standards	ASTM F1140, F2054, F2095
Power Supply Voltage	100 to 230 vac 50/60 hz, 45 watts mac. 5 watts in Standby mode
Display	Multicolor 5.7" QVGA, Touchscreen
Air supply pressure	60 to 120 psig (4.0 to 8.0 bar), Instrument quality air
Units of measure	psi/InH ₂ O / mbar / kPa / InHg
Measuring Range	BT-IP-050; 5 InH ₂ O @ 4° C (0.1806 psi) to 50 psi (12.5 to 3450 mbar). BT-IP-100: 0.5 psi InH ₂ O to 100 psi (34 to 6895 mbar)
Communications	USB host port (2x), RS232, VGA monitor display, Network LAN (RJ-45), USB device port (PC Comm Port)
Accessory I/O	8 Opto Outputs, 8 Inputs, 3 Digital I/O, Start, Stop - Inputs Pass Fail - outputs

Weights & Dimensions

Depth	13in. (33cm)
Width	10in. (25.4cm)
Height	7in. (18cm)
Weight	12.5lbs. (5.6kg)

Disclaimer

The information contained in this document is liable to modification from time to time in the light of experience and our policy of continuous product development. Check the Industrial Physics website for the latest version.

Contact Details

web. www.industrialphysics.com

email. info@industrialphysics.com